

\$550,000 - 6339 109a Street, Edmonton

MLS® #E4431584

\$550,000

4 Bedroom, 2.00 Bathroom, 1,004 sqft
Single Family on 0.00 Acres

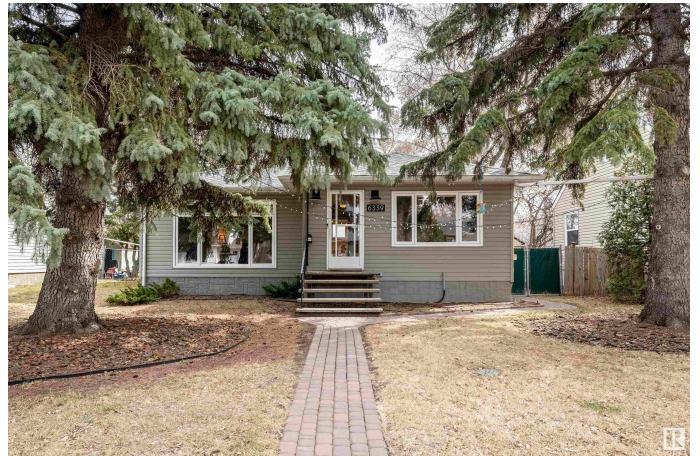
Parkallen (Edmonton), Edmonton, AB

Stunning just over 1000 Sq Ft 2+2 Bedroom, 2 Bathroom RENOVATED Bungalow on an enormous 49x143' lot, with a massive oversized HEATED DOUBLE DETACHED GARAGE in PARKALLEN, one of Edmontons most desirable neighbourhoods! In neighbourhoods like this, properties that are this updated are unbelievably rare! From updated vinyl windows and siding, to the double garage, shingles, insulation, sewer lines, electrical, hot water tank, to the new Washer/Dryer, this is a home that you can just move on in to and enjoy! You will LOVE Being minutes to the UofA, Whyte Ave, close proximity to Downtown, walking distance to some of the best schools in the city, amazing access to public transit, and a few minutes away from Southgate Mall / LRT. The massive windows that were added to this home make each room feel amazing, spacious, and bright. Features like the cozy great room gas fireplace, fully finished basement, stone patio in the park like backyard, SIDE ENTRANCE to the basement, and updated bathroom are a very nice bonus!

Built in 1952

Essential Information

MLS® #	E4431584
Price	\$550,000



Bedrooms	4
Bathrooms	2.00
Full Baths	2
Square Footage	1,004
Acres	0.00
Year Built	1952
Type	Single Family
Sub-Type	Detached Single Family
Style	Bungalow
Status	Active

Community Information

Address	6339 109a Street
Area	Edmonton
Subdivision	Parkallen (Edmonton)
City	Edmonton
County	ALBERTA
Province	AB
Postal Code	T6H 3C6

Amenities

Amenities	Patio, Television Connection, Vinyl Windows
Parking Spaces	4
Parking	Double Garage Detached, Heated, Over Sized

Interior

Appliances	Dishwasher-Built-In, Dryer, Hood Fan, Oven-Microwave, Refrigerator, Stove-Electric, Washer, Window Coverings
Heating	Forced Air-1, Natural Gas
Fireplace	Yes
Fireplaces	Mantel
Stories	2
Has Basement	Yes
Basement	Full, Finished

Exterior

Exterior	Wood, Vinyl
Exterior Features	Fenced, Fruit Trees/Shrubs
Roof	Asphalt Shingles

Construction	Wood, Vinyl
Foundation	Concrete Perimeter

School Information

Elementary	Parkallen School
Middle	Mckernan School
High	Strathcona School

Additional Information

Date Listed	April 17th, 2025
Days on Market	2
Zoning	Zone 15

DATA IS DEEMED RELIABLE BUT IS NOT GUARANTEED ACCURATE BY THE REALTORS® ASSOCIATION OF EDMONTON. COPYRIGHT 2025 BY THE REALTORS® ASSOCIATION OF EDMONTON. ALL RIGHTS RESERVED.Trademarks are owned or controlled by the Canadian Real Estate Association (CREA) and identify real estate professionals who are members of CREA (REALTOR®, REALTORS®) and/or the quality of services they provide (MLS®, Multiple Listing Service®)

Listing information last updated on April 19th, 2025 at 4:17pm MDT