

\$239,900 - 7077 32 Avenue, Edmonton

MLS® #E4429156

\$239,900

2 Bedroom, 1.50 Bathroom, 1,182 sqft
Condo / Townhouse on 0.00 Acres

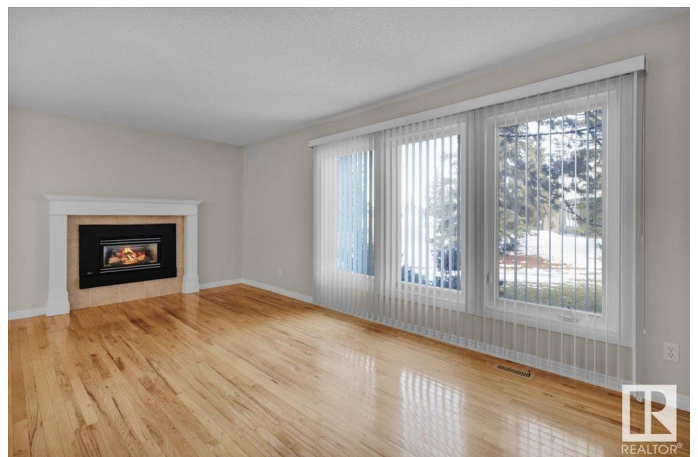
Kameyosek, Edmonton, AB

Terrific end unit tucked away in a quiet complex surrounded by mature trees. Large and private 40 ft wide yard with massive deck. Hard to find double attached garage. Very nicely maintained and updated unit with loads of hardwood flooring, gas fireplace, lots of windows and an unspoiled basement. Original 3 bedroom plan was converted to 2 bedroom but could easily be converted back. Move in ready. Shows extremely well and priced to sell! Close to LRT, Grey Nuns Hospital, Shopping and Schools. For more details please visit the REALTOR®'s Website.

Built in 1976

Essential Information

| | |
|----------------|-------------------|
| MLS® # | E4429156 |
| Price | \$239,900 |
| Bedrooms | 2 |
| Bathrooms | 1.50 |
| Full Baths | 1 |
| Half Baths | 1 |
| Square Footage | 1,182 |
| Acres | 0.00 |
| Year Built | 1976 |
| Type | Condo / Townhouse |
| Sub-Type | Townhouse |
| Style | 2 Storey |



| | |
|--------|--------|
| Status | Active |
|--------|--------|

Community Information

| | |
|-------------|----------------|
| Address | 7077 32 Avenue |
| Area | Edmonton |
| Subdivision | Kameyosek |
| City | Edmonton |
| County | ALBERTA |
| Province | AB |
| Postal Code | T6K 2K9 |

Amenities

| | |
|----------------|------------------------|
| Amenities | Deck, Detectors Smoke |
| Parking Spaces | 2 |
| Parking | Double Garage Attached |

Interior

| | |
|--------------|---|
| Appliances | Dishwasher-Built-In, Dryer, Garage Control, Garage Opener, Microwave Hood Fan, Refrigerator, Stove-Electric, Washer |
| Heating | Forced Air-1, Natural Gas |
| Fireplace | Yes |
| Fireplaces | Mantel |
| Stories | 2 |
| Has Basement | Yes |
| Basement | Full, Unfinished |

Exterior

| | |
|-------------------|---|
| Exterior | Wood |
| Exterior Features | Backs Onto Park/Trees, Fenced, Landscaped, Playground Nearby, Public Transportation, Schools, Shopping Nearby |
| Roof | Asphalt Shingles |
| Construction | Wood |
| Foundation | Concrete Perimeter |

School Information

| | |
|------------|-------------------------|
| Elementary | Kameyosek/St. Elizabeth |
| Middle | Edith Rogers/St. Hilda |
| High | J.Percy/Holy Trinity |

Additional Information

| | |
|----------------|-----------------|
| Date Listed | April 4th, 2025 |
| Days on Market | 12 |
| Zoning | Zone 29 |
| Condo Fee | \$600 |

DATA IS DEEMED RELIABLE BUT IS NOT GUARANTEED ACCURATE BY THE REALTORS® ASSOCIATION OF EDMONTON. COPYRIGHT 2025 BY THE REALTORS® ASSOCIATION OF EDMONTON. ALL RIGHTS RESERVED. Trademarks are owned or controlled by the Canadian Real Estate Association (CREA) and identify real estate professionals who are members of CREA (REALTOR®, REALTORS®) and/or the quality of services they provide (MLS®, Multiple Listing Service®)

Listing information last updated on April 16th, 2025 at 7:17am MDT