

Courtesy Of Jonathan C Hull Of 2% Realty Pro

## \$292,900 - 304 11080 Ellerslie Road, Edmonton

MLS® #E4428516

**\$292,900**

2 Bedroom, 2.00 Bathroom, 866 sqft  
Condo / Townhouse on 0.00 Acres

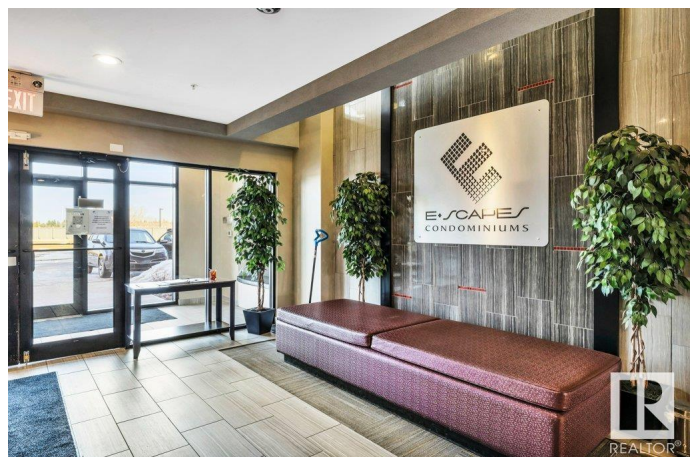
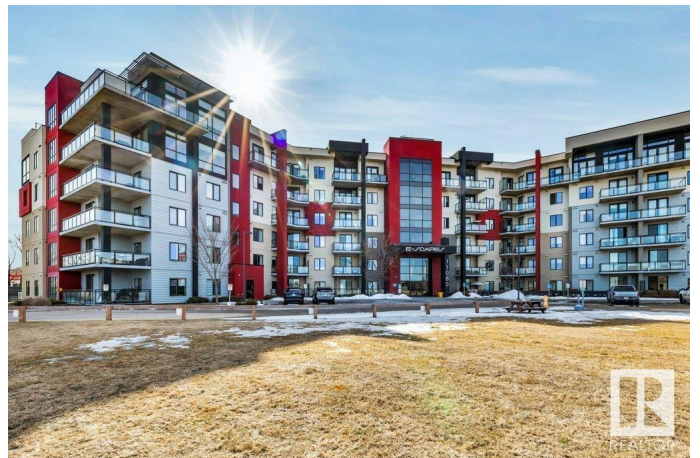
Richford, Edmonton, AB

Executive Luxury Condominium Living. This superior concrete constructed building is one of the finest in SW Edmonton with its quality finishings. Loaded with amenities like 2 rooftop terraces, exercise, & conference room, recreation room & guest suite. This 3rd floor east facing unit offers 2 bedrooms, 2 bathrooms, underground parking stall with storage. Elegant design features like hardwood floors, sublime chef's kitchen with quartz counters including counter seating, oodles of cupboard space with maple shaker full height cabinets. Living space with balcony access, primary suite with walk thru closet to ensuite including double sinks & double shower. Other notable feature are quartz counters thru entire unit, built in work desk, insuite storage/laundry. Very well kept run building, perfect for retirees or professionals & small animals with board approval permitted.

Built in 2014

### Essential Information

MLS® #	E4428516
Price	\$292,900
Bedrooms	2
Bathrooms	2.00
Full Baths	2
Square Footage	866



Acres	0.00
Year Built	2014
Type	Condo / Townhouse
Sub-Type	Lowrise Apartment
Style	Single Level Apartment
Status	Active

### **Community Information**

Address	304 11080 Ellerslie Road
Area	Edmonton
Subdivision	Richford
City	Edmonton
County	ALBERTA
Province	AB
Postal Code	T6J 4Y6

### **Amenities**

Amenities	Ceiling 9 ft., Exercise Room, Guest Suite, Parking-Visitor, Secured Parking, Security Door, Social Rooms, Storage Cage, Rooftop Deck/Patio
Parking Spaces	1
Parking	Underground

### **Interior**

Interior Features	ensuite bathroom
Appliances	Dishwasher-Built-In, Dryer, Microwave Hood Fan, Refrigerator, Stove-Electric, Washer
Heating	Fan Coil, Natural Gas
# of Stories	6
Stories	1
Has Basement	Yes
Basement	None, No Basement

### **Exterior**

Exterior	Concrete, Stucco, Fiber Cement
Exterior Features	Golf Nearby, Public Transportation, Shopping Nearby
Roof	EPDM Membrane
Construction	Concrete, Stucco, Fiber Cement
Foundation	Concrete Perimeter

## Additional Information

Date Listed	April 1st, 2025
Days on Market	3
Zoning	Zone 55
Condo Fee	\$556

DATA IS DEEMED RELIABLE BUT IS NOT GUARANTEED ACCURATE BY THE REALTORS® ASSOCIATION OF EDMONTON. COPYRIGHT 2025 BY THE REALTORS® ASSOCIATION OF EDMONTON. ALL RIGHTS RESERVED. Trademarks are owned or controlled by the Canadian Real Estate Association (CREA) and identify real estate professionals who are members of CREA (REALTOR®, REALTORS®) and/or the quality of services they provide (MLS®, Multiple Listing Service®)

Listing information last updated on April 4th, 2025 at 1:17pm MDT