

\$509,900 - 3252 16 Avenue, Edmonton

MLS® #E4427338

\$509,900

3 Bedroom, 2.50 Bathroom, 1,548 sqft
Single Family on 0.00 Acres

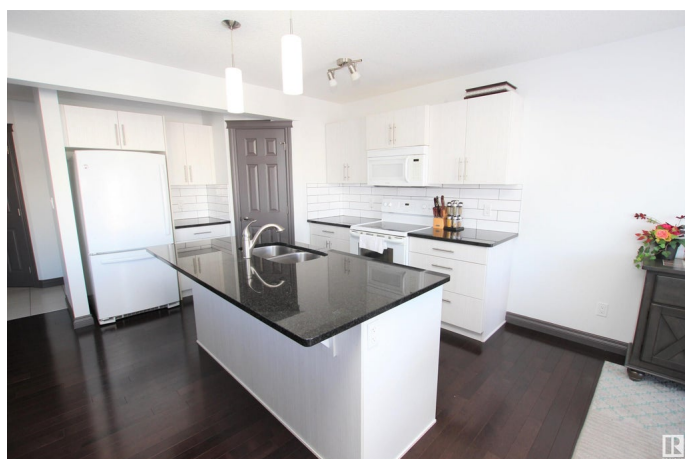
Laurel, Edmonton, AB

Welcome to this spacious 2 storey home in Laurel. This home offers 3 bedrooms and 2.5 washrooms. Entering the home we are greeted with a large entry that leads into the living room and kitchen. The kitchen offers ample cabinet and quartz counter top space and includes a corner pantry. The living room is also spacious and looks out to the huge backyard. The upper floor has 3 spacious bedrooms with the master having a 5 piece en suite including a large corner soaker tub and an oversized stand up shower. Home is situated on a huge lot with a grand backyard and a large deck. Double attached garage and a wide drive way. Make this gorgeous home yours!

Built in 2014

Essential Information

| | |
|----------------|-----------|
| MLS® # | E4427338 |
| Price | \$509,900 |
| Bedrooms | 3 |
| Bathrooms | 2.50 |
| Full Baths | 2 |
| Half Baths | 1 |
| Square Footage | 1,548 |
| Acres | 0.00 |
| Year Built | 2014 |



| | |
|----------|------------------------|
| Type | Single Family |
| Sub-Type | Detached Single Family |
| Style | 2 Storey |
| Status | Active |

Community Information

| | |
|-------------|----------------|
| Address | 3252 16 Avenue |
| Area | Edmonton |
| Subdivision | Laurel |
| City | Edmonton |
| County | ALBERTA |
| Province | AB |
| Postal Code | T6T 0V1 |

Amenities

| | |
|-----------|------------------------|
| Amenities | Deck |
| Parking | Double Garage Attached |

Interior

| | |
|-------------------|--|
| Interior Features | ensuite bathroom |
| Appliances | Dishwasher-Built-In, Garage Opener, Microwave Hood Fan, Refrigerator, Stove-Electric, Washer |
| Heating | Forced Air-1, Natural Gas |
| Stories | 2 |
| Has Basement | Yes |
| Basement | Full, Unfinished |

Exterior

| | |
|-------------------|--------------------|
| Exterior | Wood, Vinyl |
| Exterior Features | Fenced |
| Roof | Asphalt Shingles |
| Construction | Wood, Vinyl |
| Foundation | Concrete Perimeter |

Additional Information

| | |
|----------------|------------------|
| Date Listed | March 24th, 2025 |
| Days on Market | 11 |
| Zoning | Zone 30 |

DATA IS DEEMED RELIABLE BUT IS NOT GUARANTEED ACCURATE BY THE REALTORS® ASSOCIATION OF

EDMONTON. COPYRIGHT 2025 BY THE REALTORS® ASSOCIATION OF EDMONTON. ALL RIGHTS RESERVED. Trademarks are owned or controlled by the Canadian Real Estate Association (CREA) and identify real estate professionals who are members of CREA (REALTOR®, REALTORS®) and/or the quality of services they provide (MLS®, Multiple Listing Service®)

Listing information last updated on April 4th, 2025 at 12:18pm MDT