

# \$514,888 - 8209 Kiriak Loop, Edmonton

MLS® #E4426636

**\$514,888**

3 Bedroom, 2.50 Bathroom, 1,392 sqft  
Single Family on 0.00 Acres

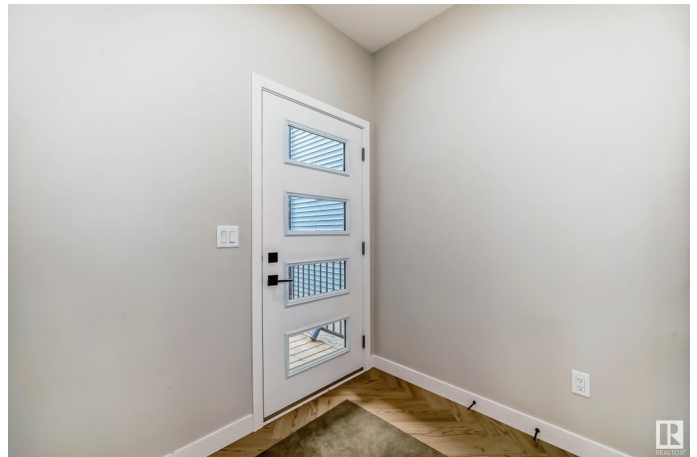
Keswick Area, Edmonton, AB

Discover modern living in this stunning single-family home in Keswick of Arbours! Featuring an attached double garage with a side entrance, this home is designed for style and function. The open main floor boasts thoughtfully defined spaces, including a stunning kitchen with 3m quartz countertops, light wood-toned cabinets, a pantry, and a water line to the fridge. Upstairs, enjoy the convenience of a dedicated laundry room, three inviting bedrooms, and a luxurious primary suite complete with a walk-in closet and spa-inspired en-suite. Scheduled to start construction with tentative completion August. \$3,000 appliance allowance & rough-grading included. Photos of previous build, interior colors are NOT represented. HOA TBD.

Built in 2025

## Essential Information

|                |           |
|----------------|-----------|
| MLS® #         | E4426636  |
| Price          | \$514,888 |
| Bedrooms       | 3         |
| Bathrooms      | 2.50      |
| Full Baths     | 2         |
| Half Baths     | 1         |
| Square Footage | 1,392     |
| Acres          | 0.00      |



|            |                        |
|------------|------------------------|
| Year Built | 2025                   |
| Type       | Single Family          |
| Sub-Type   | Detached Single Family |
| Style      | 2 Storey               |
| Status     | Active                 |

### **Community Information**

|             |                  |
|-------------|------------------|
| Address     | 8209 Kiriak Loop |
| Area        | Edmonton         |
| Subdivision | Keswick Area     |
| City        | Edmonton         |
| County      | ALBERTA          |
| Province    | AB               |
| Postal Code | T6W 5S2          |

### **Amenities**

|           |                            |
|-----------|----------------------------|
| Amenities | Ceiling 9 ft., See Remarks |
| Parking   | Double Garage Attached     |

### **Interior**

|                   |  |
|-------------------|--|
| Interior Features | ensuite bathroom                                     |
| Appliances        | Garage Control, Garage Opener, Hood Fan, See Remarks |
| Heating           | Forced Air-1, Natural Gas                            |
| Stories           | 2  |
| Has Basement      | Yes  |
| Basement          | Full, Unfinished                                     |

### **Exterior**

|                   |   |
|-------------------|---|
| Exterior          | Wood, Vinyl   |
| Exterior Features | Airport Nearby, Playground Nearby, Public Transportation, Schools, Shopping Nearby, See Remarks |
| Roof              | Asphalt Shingles  |
| Construction      | Wood, Vinyl   |
| Foundation        | Concrete Perimeter  |

### **Additional Information**

|                |                  |
|----------------|------------------|
| Date Listed    | March 20th, 2025 |
| Days on Market | 21               |
| Zoning         | Zone 56          |

HOA Fees 1

HOA Fees Freq. Annually

DATA IS DEEMED RELIABLE BUT IS NOT GUARANTEED ACCURATE BY THE REALTORS® ASSOCIATION OF EDMONTON. COPYRIGHT 2025 BY THE REALTORS® ASSOCIATION OF EDMONTON. ALL RIGHTS RESERVED. Trademarks are owned or controlled by the Canadian Real Estate Association (CREA) and identify real estate professionals who are members of CREA (REALTOR®, REALTORS®) and/or the quality of services they provide (MLS®, Multiple Listing Service®)

Listing information last updated on April 10th, 2025 at 1:02am MDT