

\$209,000 - 119 2420 108 Street, Edmonton

MLS® #E4422408

\$209,000

2 Bedroom, 1.00 Bathroom, 867 sqft

Condo / Townhouse on 0.00 Acres

Ermineskin, Edmonton, AB

Bright and spacious 2 bed + 1 bath condo in the sought-after Californian Casa! Designed for comfort and convenience, this 18+ home features an open-concept layout with a large kitchen, center island, and a cozy living room with a gas fireplace. Featuring a private, covered patio with a gas BBQ hookupâ€”perfect for summer evenings! Stay cool with central A/C and enjoy the ease of in-suite laundry. The unit includes titled heated underground parking as well. Building amenities abound, including a guest suite, well-equipped fitness room, hobby room, car wash, and a social room. Ideally located in southwest Edmonton, you're walking distance to shopping, banks, restaurants, and the Century Park LRT, with quick access to major freeways and the airport. Whether you're a first-time buyer, downsizing, or seeking a low-maintenance lifestyle, this condo offers everything you need in a prime location! Apartment is fully furnished, perfect for potential investors!

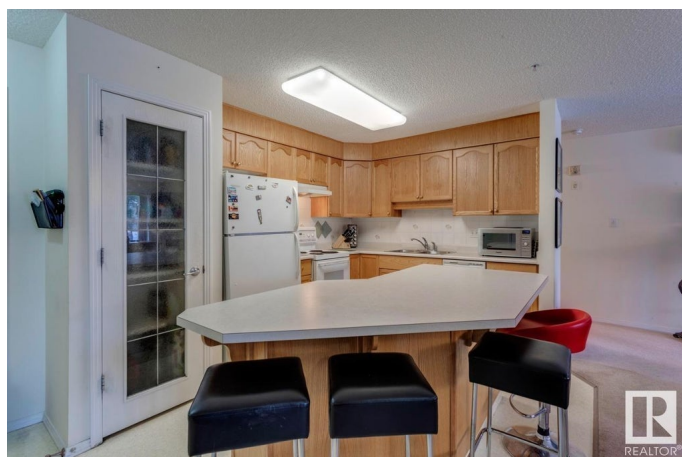
Built in 2002

Essential Information

MLS® # E4422408

Price \$209,000

Bedrooms 2



Bathrooms	1.00
Full Baths	1
Square Footage	867
Acres	0.00
Year Built	2002
Type	Condo / Townhouse
Sub-Type	Lowrise Apartment
Style	Single Level Apartment
Status	Active

Community Information

Address	119 2420 108 Street
Area	Edmonton
Subdivision	Ermineskin
City	Edmonton
County	ALBERTA
Province	AB
Postal Code	T6J 7J3

Amenities

Amenities	Air Conditioner, Car Wash, Exercise Room, Guest Suite, Party Room
Parking Spaces	1
Parking	Heated, Parkade

Interior

Appliances	Air Conditioning-Central, Dishwasher-Built-In, Dryer, Furniture Included, Oven-Microwave, Refrigerator, Stove-Electric, Washer, Window Coverings
Heating	In Floor Heat System, Natural Gas
Fireplace	Yes
Fireplaces	Insert
# of Stories	4
Stories	1
Has Basement	Yes
Basement	None, No Basement

Exterior

Exterior	Wood, Stucco
Exterior Features	Playground Nearby, Schools, Shopping Nearby

Roof	Asphalt Shingles
Construction	Wood, Stucco
Foundation	Concrete Perimeter

Additional Information

Date Listed	February 21st, 2025
Days on Market	56
Zoning	Zone 16
Condo Fee	\$458

DATA IS DEEMED RELIABLE BUT IS NOT GUARANTEED ACCURATE BY THE REALTORS® ASSOCIATION OF EDMONTON. COPYRIGHT 2025 BY THE REALTORS® ASSOCIATION OF EDMONTON. ALL RIGHTS RESERVED. Trademarks are owned or controlled by the Canadian Real Estate Association (CREA) and identify real estate professionals who are members of CREA (REALTOR®, REALTORS®) and/or the quality of services they provide (MLS®, Multiple Listing Service®)

Listing information last updated on April 18th, 2025 at 4:02pm MDT